

SUPERFICIE MQ	piano -3	piano -2	piano -1	piano 0	piano 1	piano 2	piano 3	piano 4	piano 5	piano 6	piano 7	piano 8	TOTALI
ESTERNA CARRABILE	164,21	194,63		445,29									804,13
SCALA E ATRI	68,90	285,76				67,27							421,93
ARCHIVIO	1 382,40	2 310,91			40,07	10,55							3 743,93
RIMESSA			1 957,81										1 957,81
UFFICI				158,02	158,62	724,05	1 372,20	996,52	927,48	773,90			5 110,79
AULE				1 227,13	383,60	398,68							2 009,41
CORRIDOI				653,54	364,25	796,47	505,91	316,09	425,65	449,49			3 511,40
SERV. IGIENICI				47,92	49,00	105,02	89,96	89,49	74,35	74,35			530,09
SPAZI ESTERNI					439,81	150,30	439,88	614,82	157,19	143,83	1 110,99		3 056,82
BALCONI CHIUSI						7,46	410,17	392,56	392,56	381,41			1 584,16
IMPIANTI											581,99		581,99

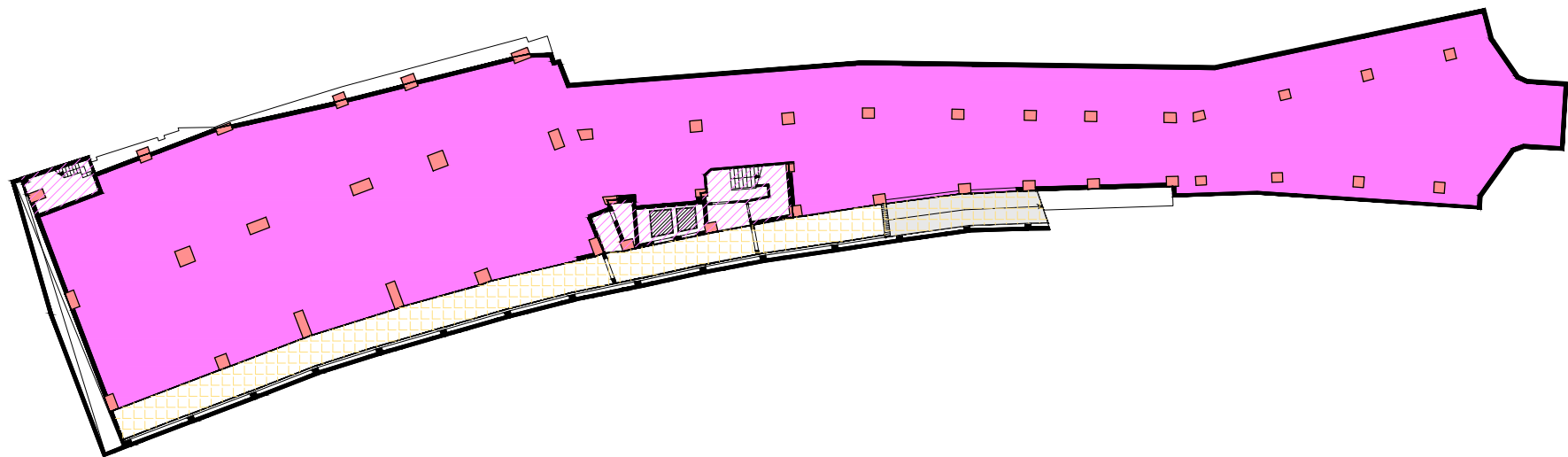
23 312,46




SUPERFICIE MQ	piano -3	piano -2	piano -1	piano 0	piano 1	piano 2	piano 3	piano 4	piano 5	piano 6	piano 7	piano 8	TOTALE
COMUNE		614,41	641,40	1 307,78	1 468,00	322,65							4 354,24

RAGUSA CENTRO

PIANO TERZO SOTTOSTRADA
(PIANO A QUOTA 495,55)

-3

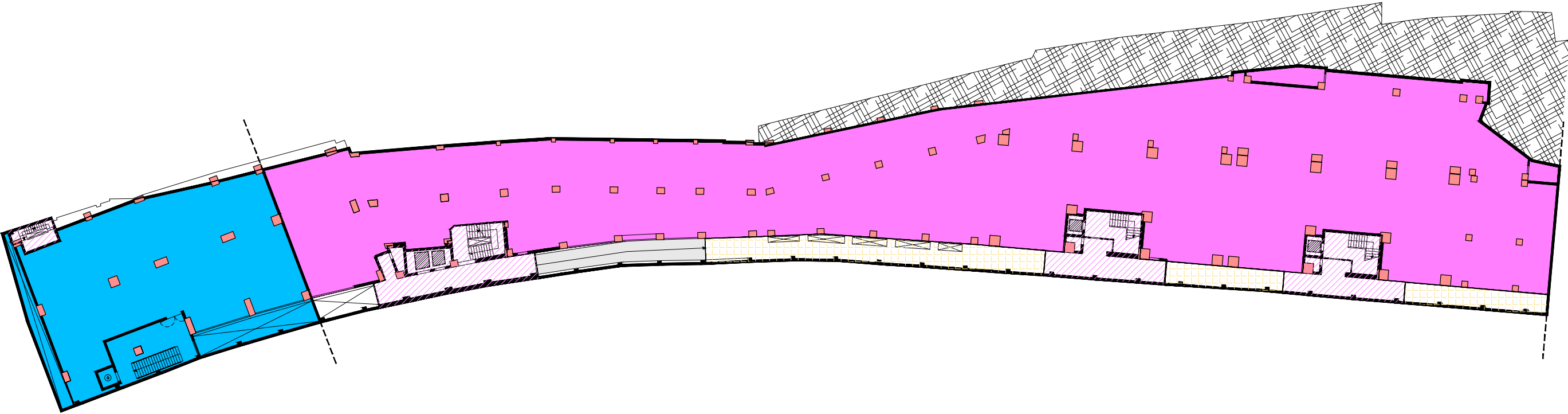


	SUP. ARCHIVIO	mq	1.382,40
	SUP. ESTERNA CARRABILE	mq	164,21
	SUP. SCALE E ATRI	mq	68,90

RAGUSA CENTRO

PIANO SECONDO SOTTOSTRADA
(PIANO A QUOTA 498,75)

-2

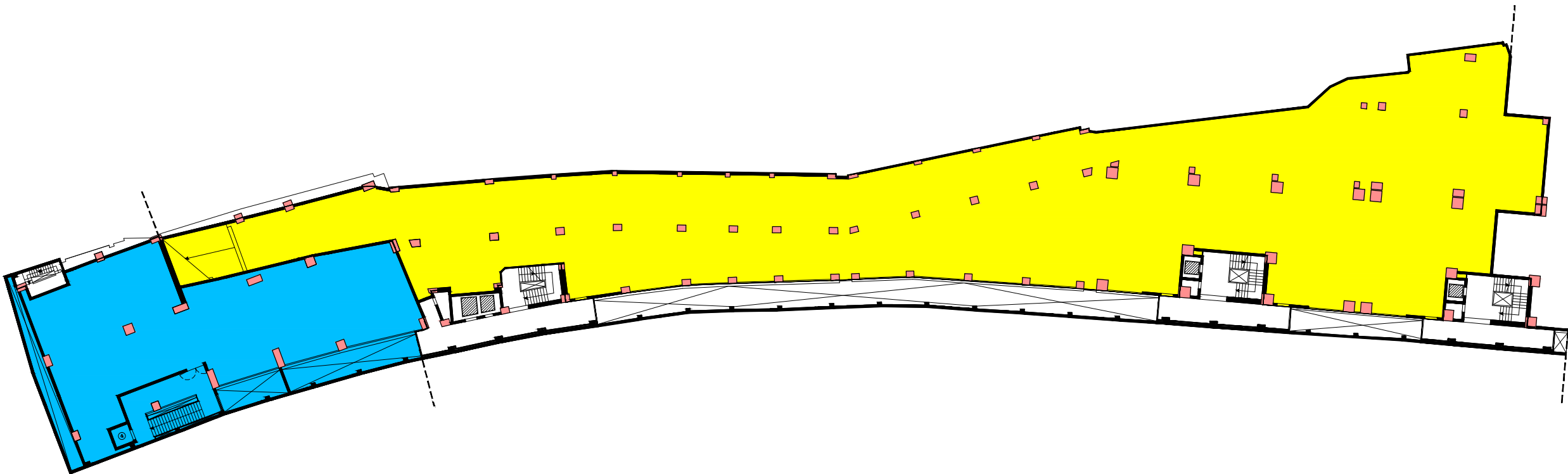


	SUP. DESTINATA AL COMUNE	mq	614,41		SUP. ARCHIVIO	mq	2.310,91
					SUP. ESTERNA CARRABILE	mq	194,63
					SUP. SCALE E ATRI	mq	285,76

RAGUSA CENTRO

PIANO PRIMO SOTTOSTRADA
(PIANO A QUOTA 501,95)

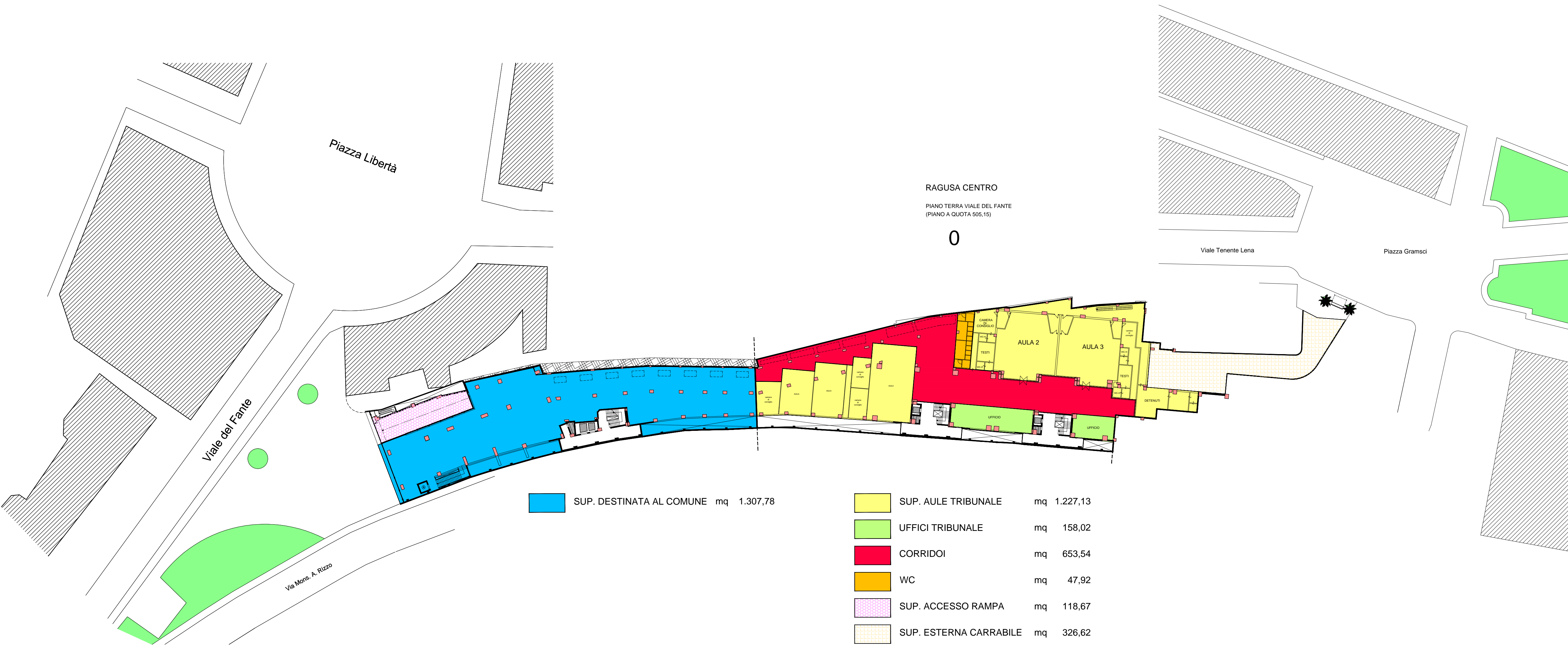
-1



SUP. DESTINATA AL COMUNE mq 641,40



SUP. RIMESSA mq 1.957,81



RAGUSA CENTRO

PIANO TERRA VIALE DEL FANTE
(PIANO A QUOTA 505,15)

0

Viale Tenente Lena

Piazza Gramsci

Viale del Fante

Via Mons. A. Rizzo

Piazza Libertà

SUP. DESTINATA AL COMUNE mq 1.307,78

SUP. AULE TRIBUNALE mq 1.227,13

UFFICI TRIBUNALE mq 158,02

CORRIDOI mq 653,54

WC mq 47,92

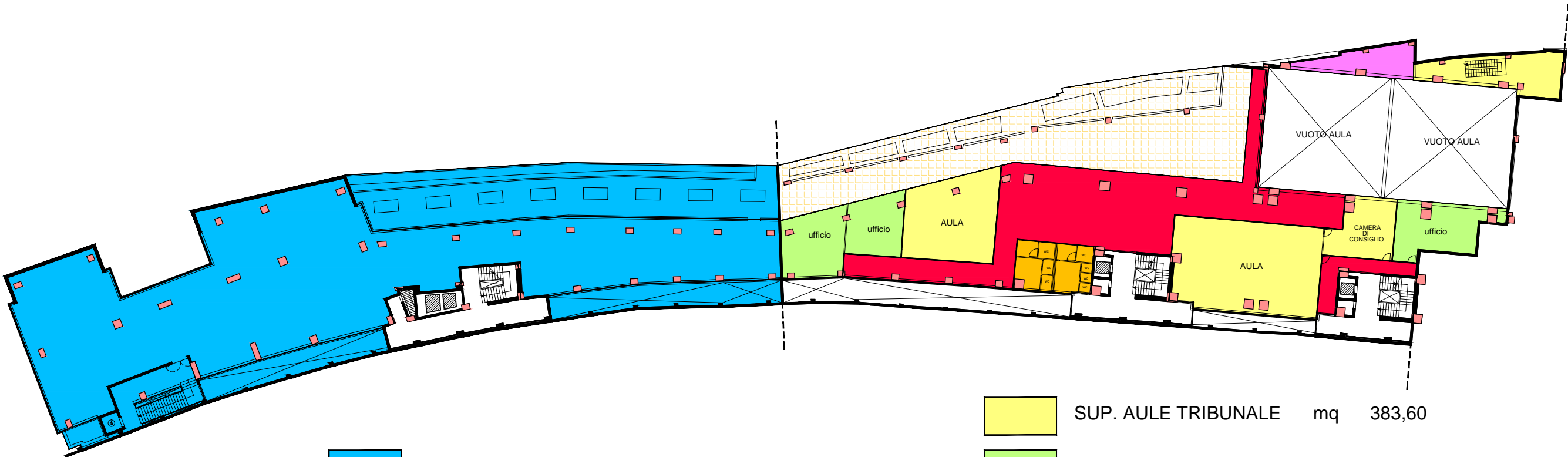
SUP. ACCESSO RAMPA mq 118,67

SUP. ESTERNA CARRABILE mq 326,62

RAGUSA CENTRO

PIANO TERRA PIAZZA GRAMSCI
(PIANO A QUOTA 509,35)

1



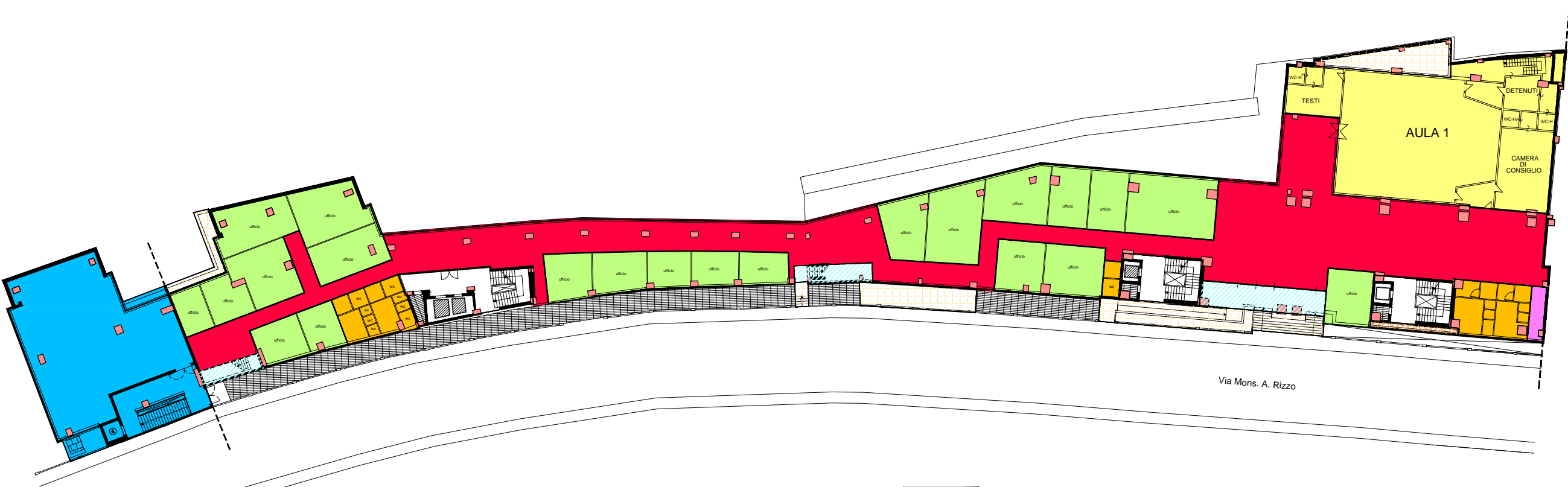
SUP. DESTINATA AL COMUNE mq 1.468,00

SUP. AULE TRIBUNALE	mq	383,60
UFFICI TRIBUNALE	mq	158,62
CORRIDOI	mq	364,25
WC	mq	49,00
DEPOSITI - ARCHIVI	mq	40,07
SPAZIO ESTERNO	mq	439,81









RAGUSA CENTRO

PIANO TERRA VIA MONS. A. RIZZO
(PIANO A QUOTA 513,35)

2



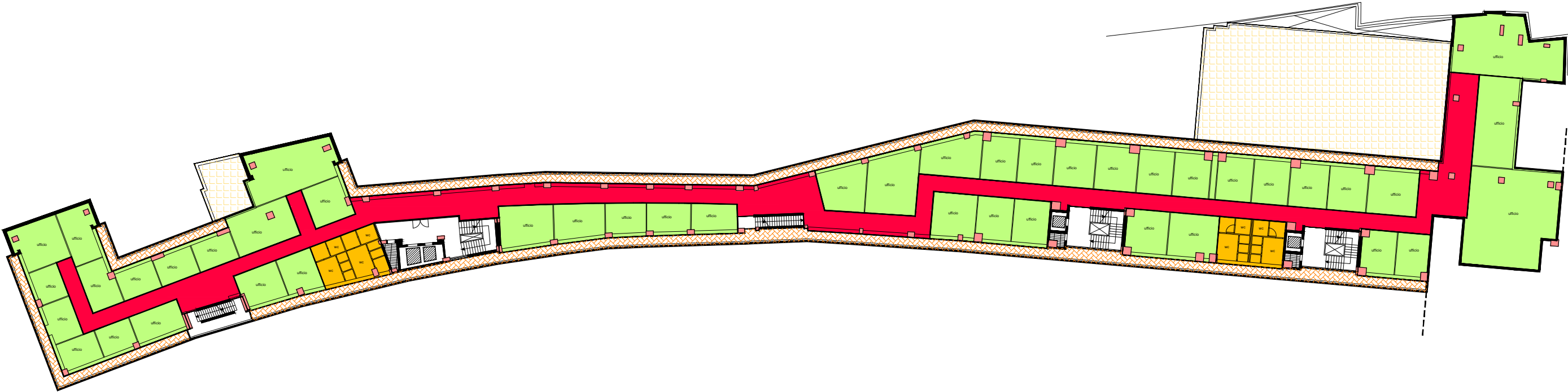
 SUP. DESTINATA AL COMUNE mq 322,65



	SUP. AULE TRIBUNALE	mq	398,68
	UFFICI TRIBUNALE	mq	724,05
	CORRIDOI	mq	796,47
	WC	mq	105,02
	DEPOSITI - ARCHIVI	mq	10,55
	SPAZIO ESTERNO	mq	150,30
	SUP. SCALE E ATRI	mq	67,27
	BALCONI CHIUSI	mq	7,46

RAGUSA CENTRO

PIANO PRIMO VIA MONS. A. RIZZO
(PIANO A QUOTA 517,35)

3

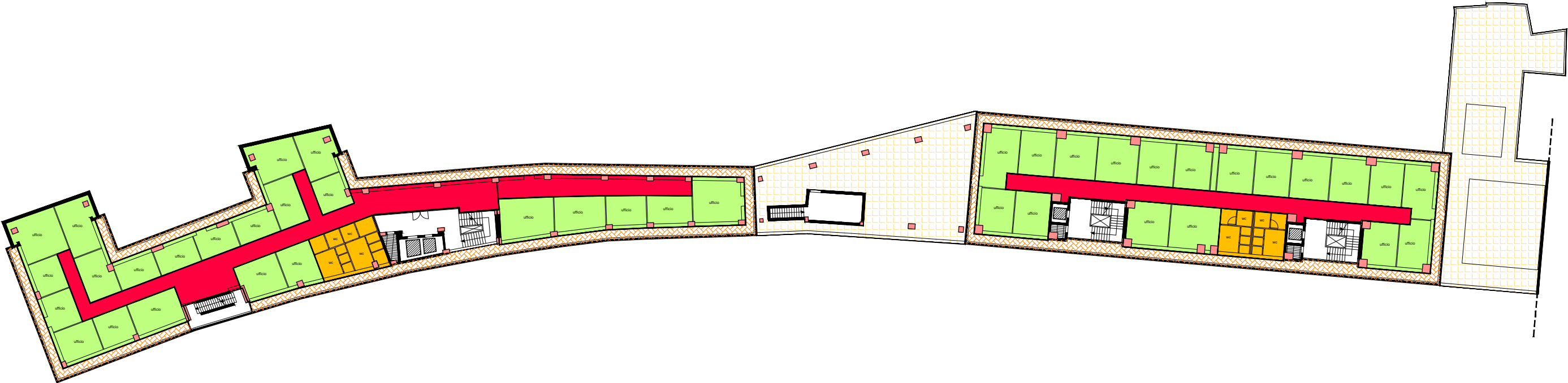


	UFFICI TRIBUNALE	mq	1.372,20
	CORRIDOI	mq	505,91
	WC	mq	89,96
	BALCONI CHIUSI	mq	410,17
	SPAZIO ESTERNO	mq	439,88

RAGUSA CENTRO

PIANO SECONDO VIA MONS. A. RIZZO
(PIANO A QUOTA 521,25)

4

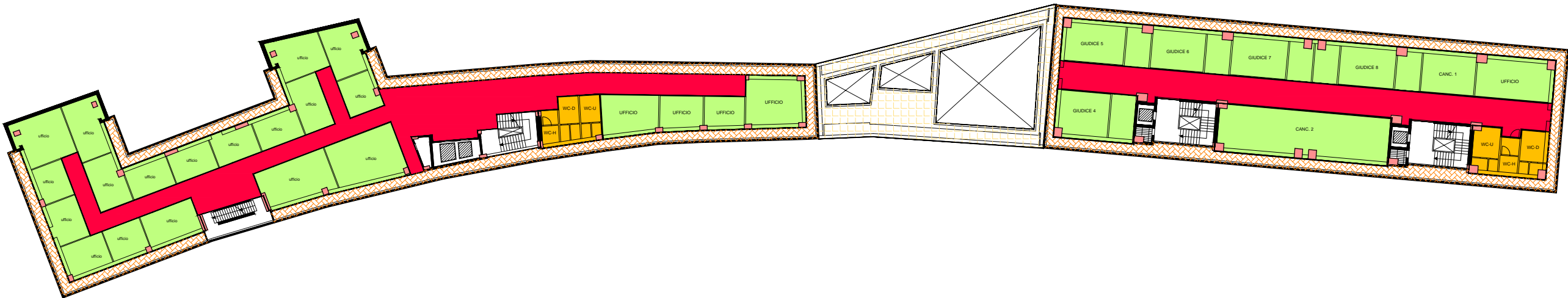


	UFFICI TRIBUNALE	mq	996,52
	CORRIDOI	mq	316,09
	WC	mq	89,49
	BALCONI CHIUSI	mq	392,56
	SPAZIO ESTERNO	mq	614,82

RAGUSA CENTRO

PIANO TERZO VIA MONS. A. RIZZO
(PIANO A QUOTA 525,15)

5

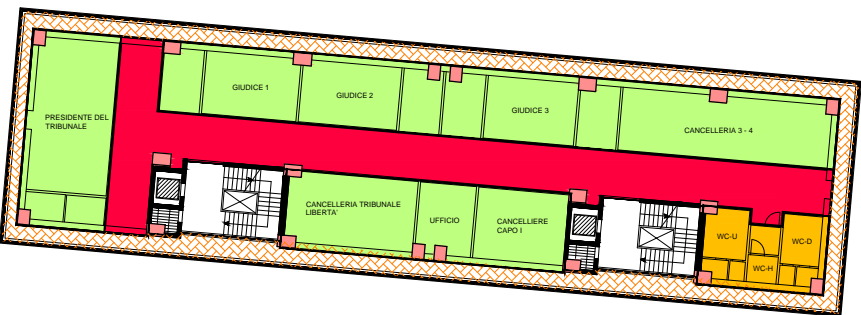
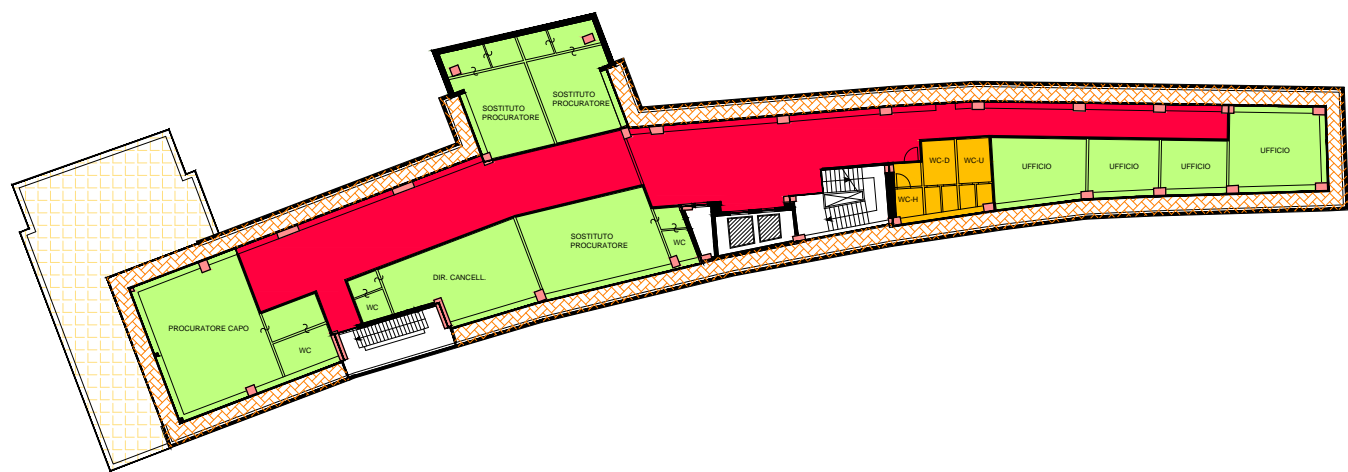






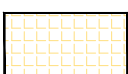
	UFFICI TRIBUNALE	mq	927,48
	CORRIDOI	mq	425,65
	WC	mq	74,35
	BALCONI CHIUSI	mq	392,56
	SPAZIO ESTERNO	mq	157,19

RAGUSA CENTRO

PIANO QUARTO VIA MONS. A. RIZZO
(PIANO A QUOTA 529,05)

6

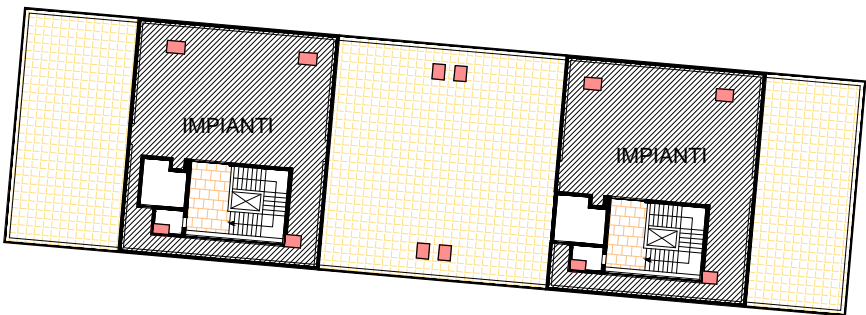
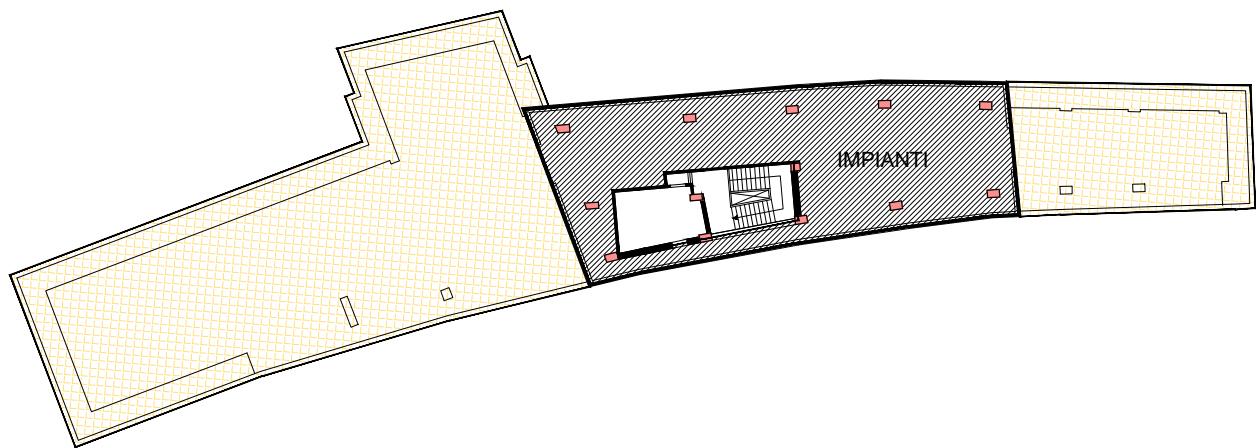


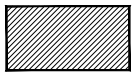

	UFFICI TRIBUNALE	mq	773,90
	CORRIDOI	mq	449,49
	WC	mq	74,35
	BALCONI CHIUSI	mq	381,41
	SPAZIO ESTERNO	mq	143,83

RAGUSA CENTRO

PIANO QUINTO VIA MONS. A. RIZZO
(PIANO A QUOTA 532,95)

7



	LOCALI IMPIANTI	mq	581,99
	SPAZIO ESTERNO	mq	1.110,99

RAGUSA CENTRO

PIANO SESTO VIA MONS. A. RIZZO
(PIANO A QUOTA 536,85)

8



SPAZIO ESTERNO mq 732,16